

LED MODULES

TECOH® RLx

The TECOH® RLx are round shaped constant current LED modules mainly intended for general lighting applications

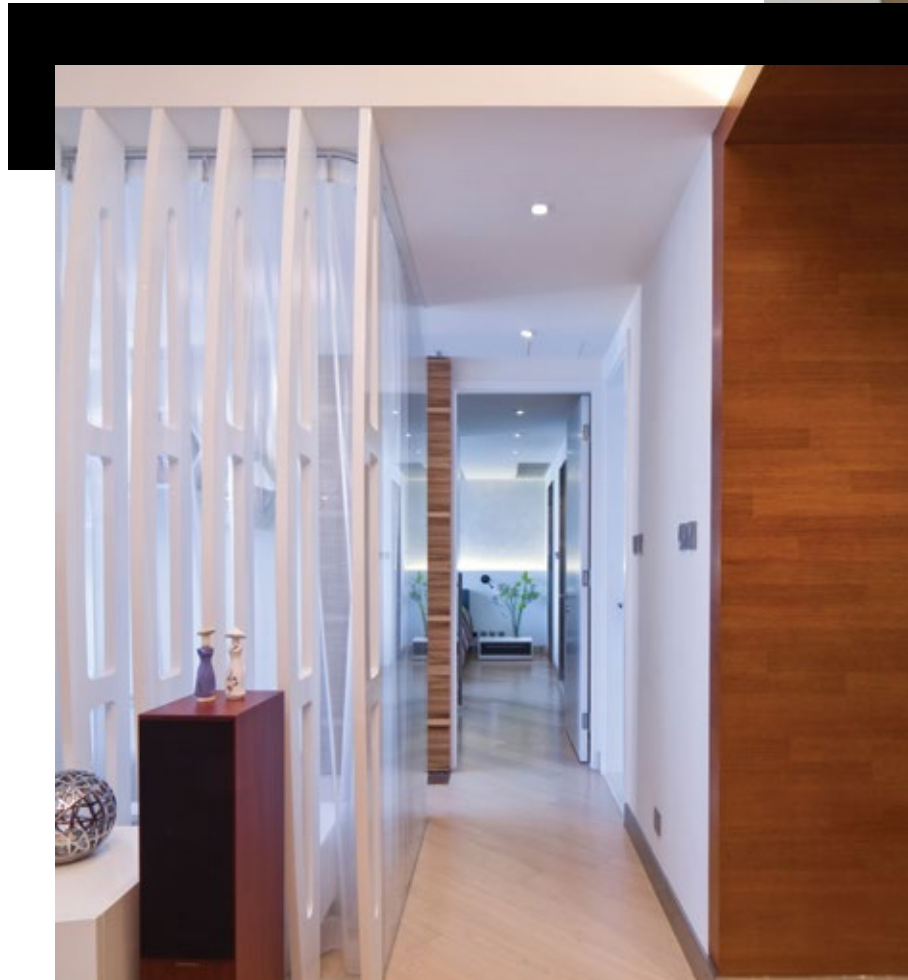
The TECOH® RLx are designed as energy efficient LED alternatives for conventional light sources such as halogen and compact fluorescent products in new luminaires.

Different lumen packages are available in the same size and with the same fixing holes allowing for multifunctional fixture design and flexible stocking.

The TECOH® RLx modules are to be used in combination with diffuse covers for optimum performance. The RLx range allows for cost competitive LED upgrades.

Product Features

- Energy efficient alternative to CFL and halogen in general lighting applications
- Long lamp life (L70 B10 at Tc 75°C) of 30,000 hours
- Different lumen packages with same size module and same fixing holes for flexibility
- High colour rendition of up to Ra82
- Colour consistency is ≤ 4 SDCM
- Operating temperature : -30°C to +40°C
- Dimmable





LED MODULES TECOH[®] RLx



1 **NEW**



2 **NEW**

Powered by LED Driver

Dimmable*

SDCM
≤4

Product Code	Input Current (mA)	Nominal Voltage (V DC)	Wattage (W)	Luminous Flux at Ta 25°C (lm)	Luminous Efficacy at Ta 25°C (lm/W)	Luminous Flux at Tc 85°C (lm)	Luminous Efficacy at Tc 85°C (lm/W)	Colour Temp. [CRI]	Life Time at L70 B10 and Tc 75°C (hrs)	Diameter (mm)	Height (mm)	Energy Label	Product Photo
RL0107/830-350mA	350	22	8	800	100	720	90	3000K [Ra82]	30000	34	2.4	A+	1
RL0216/830-700mA	700	22	15	1750	117	1600	107	3000K [Ra82]	30000	34	2.4	A+	2

* Preliminary data

A dimming feature is available and performance can be enhanced by driver choice.